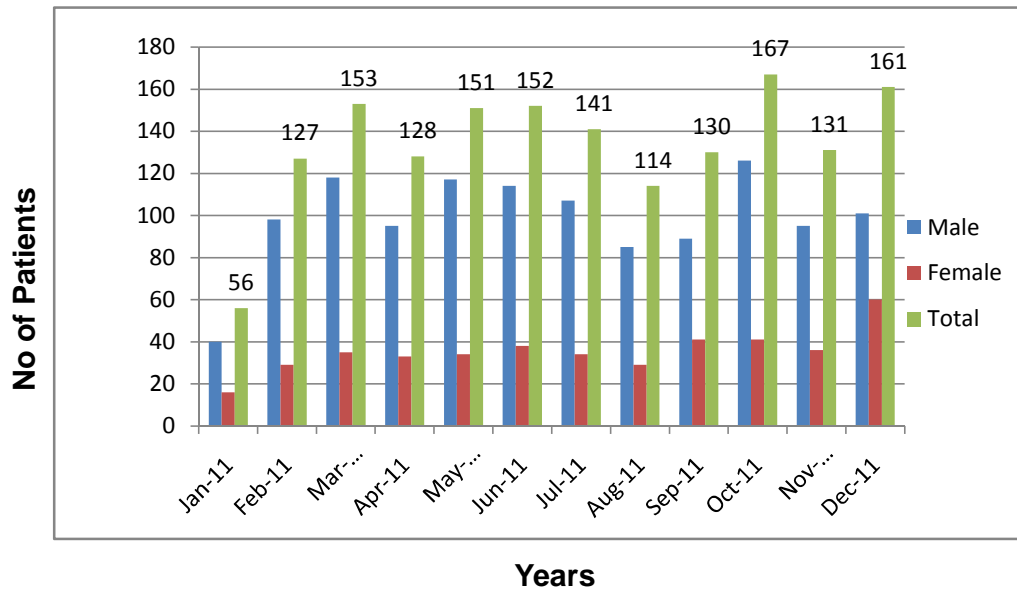


**Karachi Institute of Heart Diseases**  
**Summary of Angiography**  
**Jan 2011 To Dec 2011**

S.No	Month & Year	Male	Female	Total
1	Jan-11	40	16	56
2	Feb-11	98	29	127
3	Mar-11	118	35	153
4	Apr-11	95	33	128
5	May-11	117	34	151
6	Jun-11	114	38	152
7	Jul-11	107	34	141
8	Aug-11	85	29	114
9	Sep-11	89	41	130
10	Oct-11	126	41	167
11	Nov-11	95	36	131
12	Dec-11	101	60	161
<b>Total</b>		<b>1185</b>	<b>426</b>	<b>1611</b>

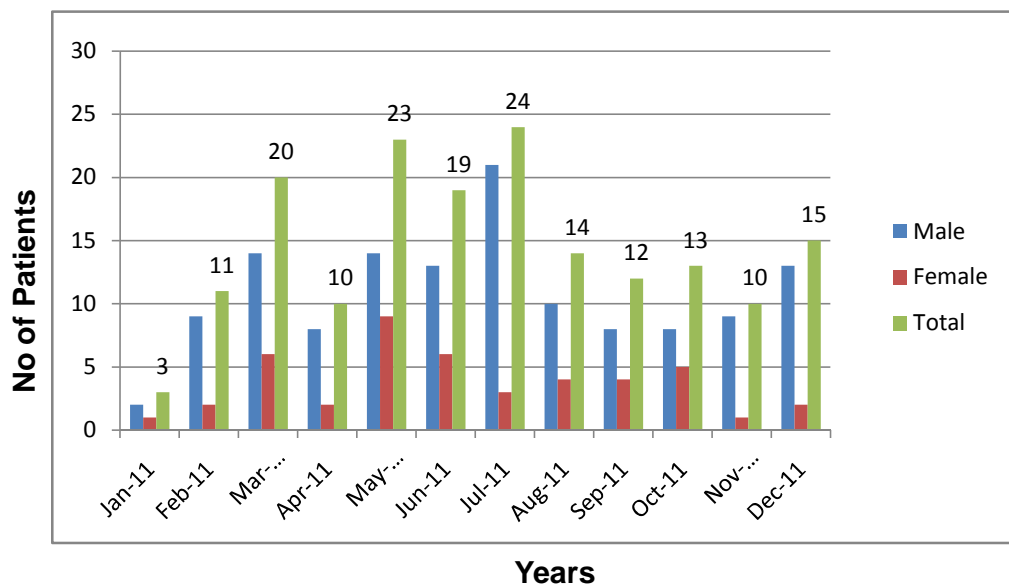
**Summary Of Angiography**  
**Jan 2011 - Dec 2011**



**Karachi Institute of Heart Diseases**  
**Summary of Angioplasty**  
**Jan 2011 To Dec 2011**

S.No	Month & Year	Male	Female	Total
1	Jan-11	2	1	3
2	Feb-11	9	2	11
3	Mar-11	14	6	20
4	Apr-11	8	2	10
5	May-11	14	9	23
6	Jun-11	13	6	19
7	Jul-11	21	3	24
8	Aug-11	10	4	14
9	Sep-11	8	4	12
10	Oct-11	8	5	13
11	Nov-11	9	1	10
12	Dec-11	13	2	15
<b>Total</b>		<b>129</b>	<b>45</b>	<b>174</b>

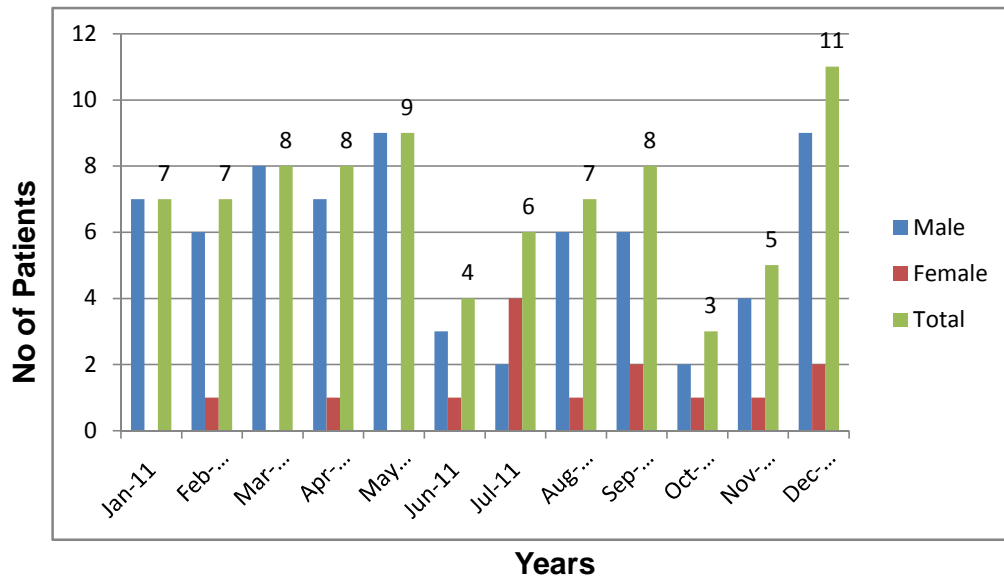
**Summary Of Angioplasty**  
**Jan 2011 - Dec 2011**



**Karachi Institute of Heart Diseases**  
**Summary of Bypass**  
**Jan 2011 To Dec 2011**

S.No	Month & Year	Male	Female	Total
1	Jan-11	7	0	7
2	Feb-11	6	1	7
3	Mar-11	8	0	8
4	Apr-11	7	1	8
5	May-11	9	0	9
6	Jun-11	3	1	4
7	Jul-11	2	4	6
8	Aug-11	6	1	7
9	Sep-11	6	2	8
10	Oct-11	2	1	3
11	Nov-11	4	1	5
12	Dec-11	9	2	11
<b>Total</b>		<b>69</b>	<b>14</b>	<b>83</b>

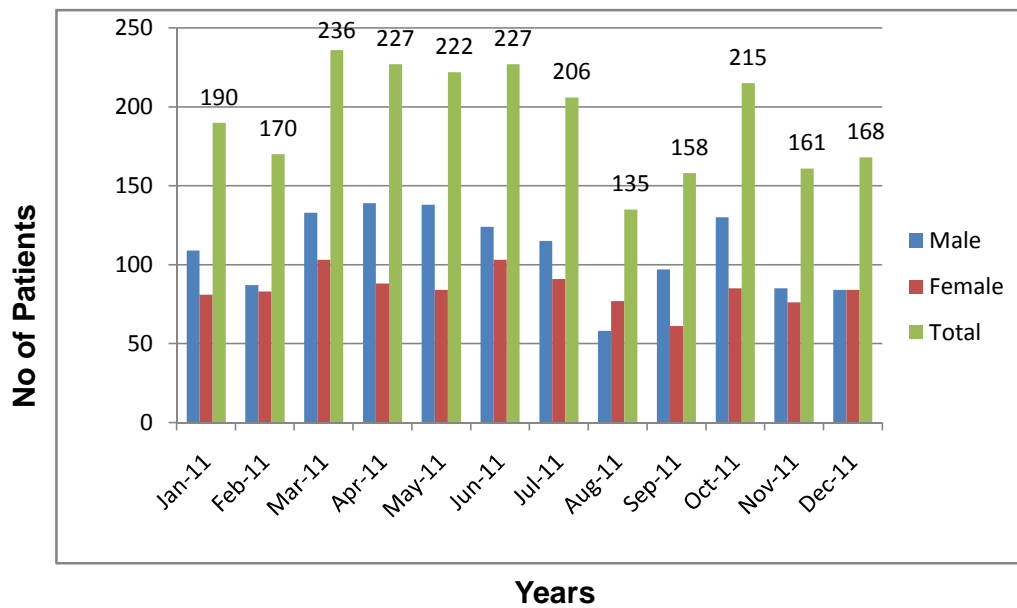
**Summary Of Bypass**  
**Jan 2011 - Dec 2011**



**Karachi Institute of Heart Diseases**  
**Summary of Thallium**  
**Jan 2011 To Dec 2011**

S.No	Month & Year	Male	Female	Total
1	Jan-11	109	81	190
2	Feb-11	87	83	170
3	Mar-11	133	103	236
4	Apr-11	139	88	227
5	May-11	138	84	222
6	Jun-11	124	103	227
7	Jul-11	115	91	206
8	Aug-11	58	77	135
9	Sep-11	97	61	158
10	Oct-11	130	85	215
11	Nov-11	85	76	161
12	Dec-11	84	84	168
<b>Total</b>		<b>1299</b>	<b>1016</b>	<b>2315</b>

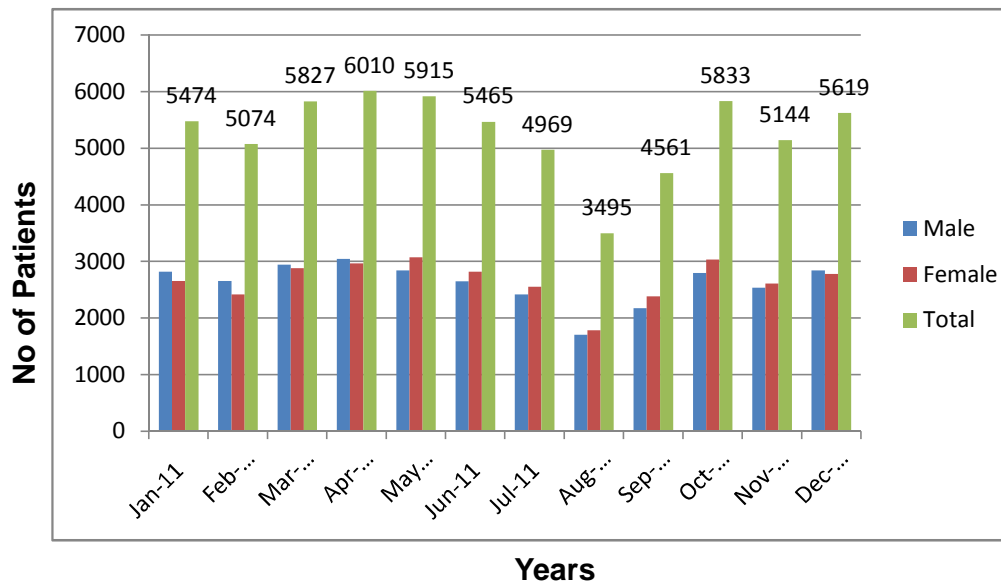
**Summary Of Thallium**  
**Jan 2011 - Dec 2011**



**Karachi Institute of Heart Diseases**  
**Summary of OPD**  
**Jan 2011 To Dec 2011**

S.No	Month & Year	Male	Female	Total
1	Jan-11	2817	2657	5474
2	Feb-11	2656	2418	5074
3	Mar-11	2944	2883	5827
4	Apr-11	3044	2966	6010
5	May-11	2841	3074	5915
6	Jun-11	2647	2818	5465
7	Jul-11	2417	2552	4969
8	Aug-11	1707	1788	3495
9	Sep-11	2176	2385	4561
10	Oct-11	2797	3036	5833
11	Nov-11	2534	2610	5144
12	Dec-11	2841	2778	5619
<b>Total</b>		<b>31421</b>	<b>31965</b>	<b>63386</b>

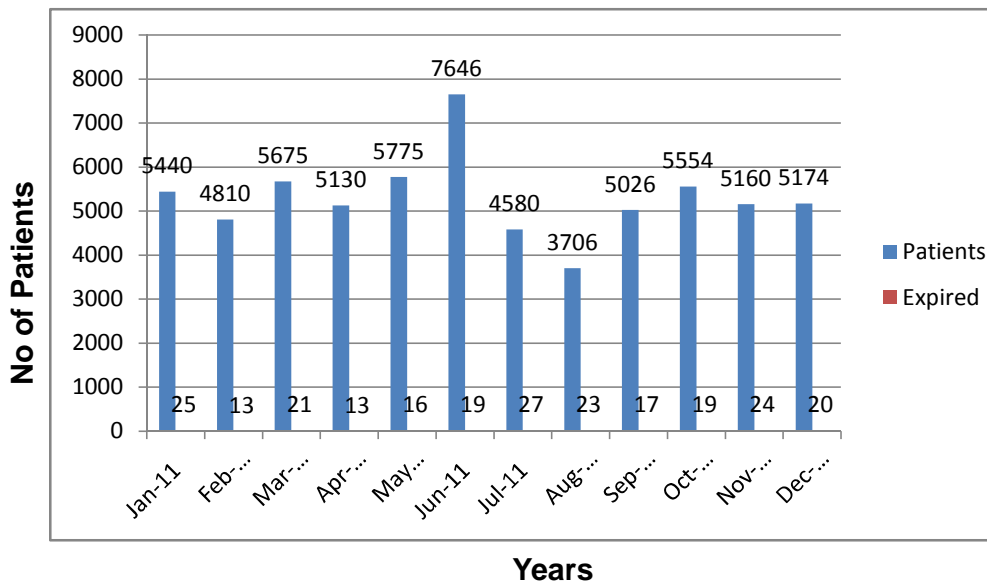
**Summary Of O.P.D**  
**Jan 2011 - Dec 2011**



**Karachi Institute of Heart Diseases**  
**Summary of ER**  
**Jan 2011 To Dec 2011**

S.No	Month & Year	Patients	Expired	B.D	% of Exp
1	Jan-11	5440	25	62	0.459
2	Feb-11	4810	13	40	0.27
3	Mar-11	5675	21	41	0.37
4	Apr-11	5130	13	40	0.25
5	May-11	5775	16	45	0.277
6	Jun-11	7646	19	59	0.338
7	Jul-11	4580	27	58	0.5895
8	Aug-11	3706	23	41	0.6219
9	Sep-11	5026	17	51	0.3382
10	Oct-11	5554	19	45	0.342
11	Nov-11	5160	24	63	0.465
12	Dec-11	5174	20	67	0.3865
<b>Total</b>		<b>63676</b>	<b>237</b>	<b>612</b>	<b>0.3228</b>

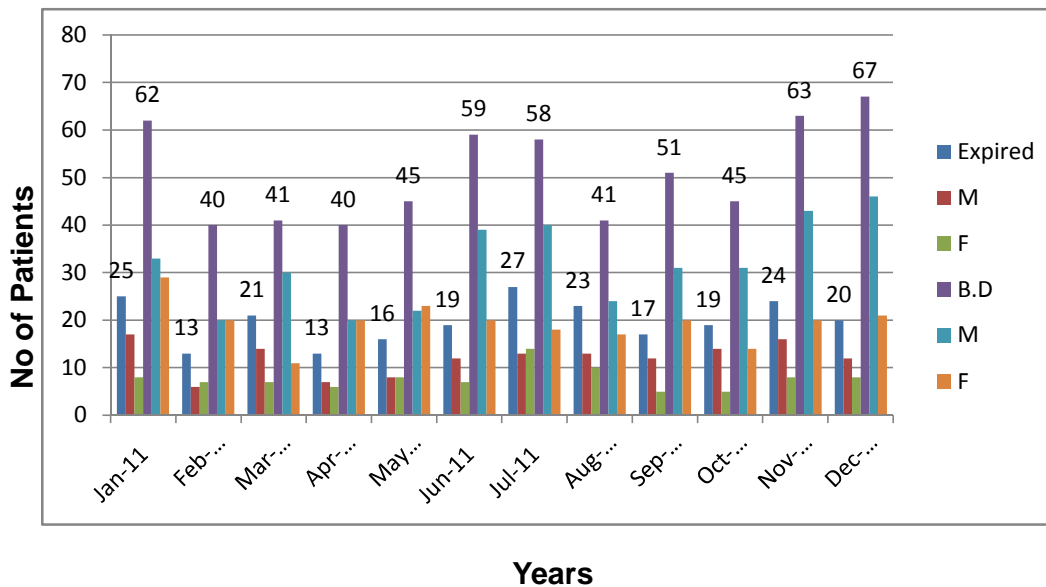
**Summary Of E.R**  
**Jan 2011 - Dec 2011**



**Karachi Institute of Heart Diseases**  
**Summary of ER ( Expire & BD)**  
**Jan 2011 To Dec 2011**

S.No	Month & Year	Expired	M	F	B.D	M	F
1	Jan-11	25	17	8	62	33	29
2	Feb-11	13	6	7	40	20	20
3	Mar-11	21	14	7	41	30	11
4	Apr-11	13	7	6	40	20	20
5	May-11	16	8	8	45	22	23
6	Jun-11	19	12	7	59	39	20
7	Jul-11	27	13	14	58	40	18
8	Aug-11	23	13	10	41	24	17
9	Sep-11	17	12	5	51	31	20
10	Oct-11	19	14	5	45	31	14
11	Nov-11	24	16	8	63	43	20
12	Dec-11	20	12	8	67	46	21
<b>Total</b>		<b>237</b>	<b>144</b>	<b>93</b>	<b>612</b>	<b>379</b>	<b>233</b>

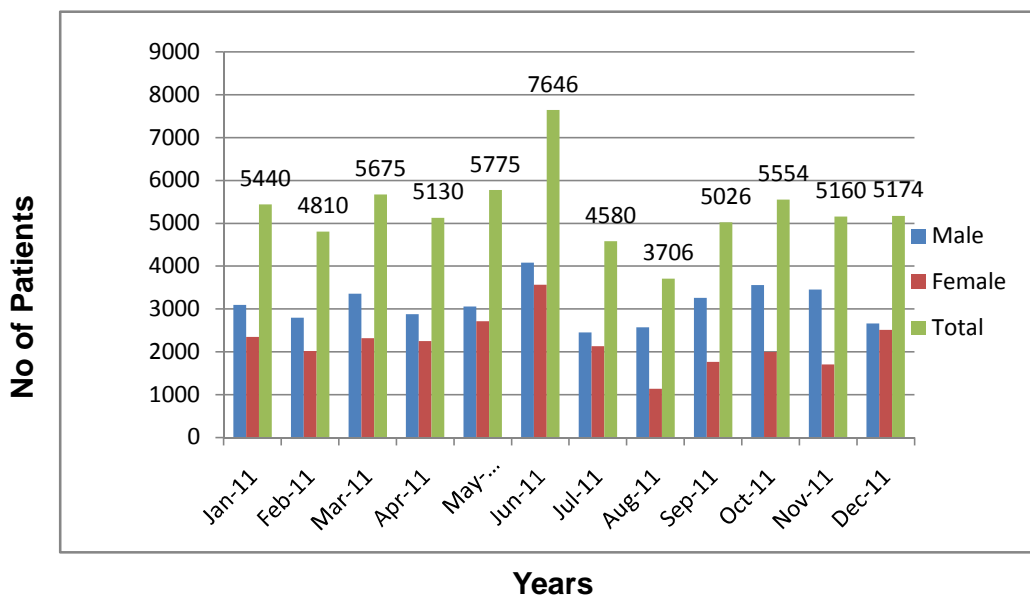
**Summary Of E.R(Expire & BD)**  
**Jan 2011 - Dec 2011**



**Karachi Institute of Heart Diseases**  
**Summary of ER**  
**Jan 2011 To Dec 2011**

S.No	Month & Year	Male	Female	Total
1	Jan-11	3095	2345	5440
2	Feb-11	2795	2015	4810
3	Mar-11	3360	2315	5675
4	Apr-11	2880	2250	5130
5	May-11	3060	2715	5775
6	Jun-11	4084	3562	7646
7	Jul-11	2449	2131	4580
8	Aug-11	2568	1138	3706
9	Sep-11	3260	1766	5026
10	Oct-11	3555	1999	5554
11	Nov-11	3457	1703	5160
12	Dec-11	2663	2511	5174
<b>Total</b>		<b>37226</b>	<b>26450</b>	<b>63676</b>

**Summary Of E.R**  
**Jan 2011 - Dec 2011**

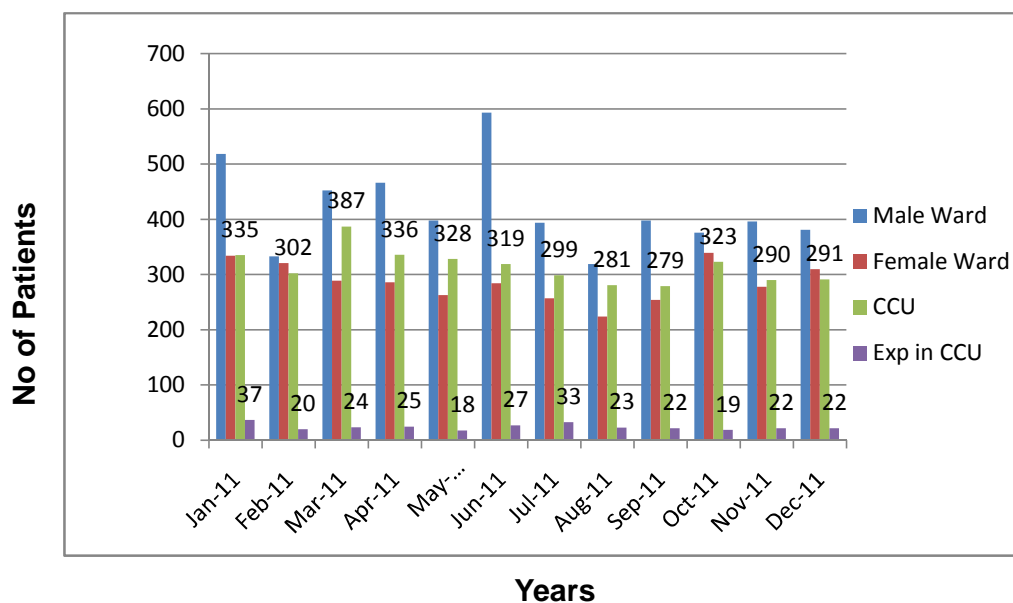




**Karachi Institute of Heart Diseases**  
**Summary of Admission**  
**Jan 2011 To Dec 2011**

S.No	Month & Year	Male Ward	Female Ward	CCU	Exp in CCU
1	Jan-11	518	334	335	37
2	Feb-11	333	321	302	20
3	Mar-11	452	289	387	24
4	Apr-11	466	286	336	25
5	May-11	398	263	328	18
6	Jun-11	593	284	319	27
7	Jul-11	394	257	299	33
8	Aug-11	319	224	281	23
9	Sep-11	398	254	279	22
10	Oct-11	376	339	323	19
11	Nov-11	396	278	290	22
12	Dec-11	381	310	291	22
<b>Total</b>		<b>5024</b>	<b>3439</b>	<b>3770</b>	<b>292</b>

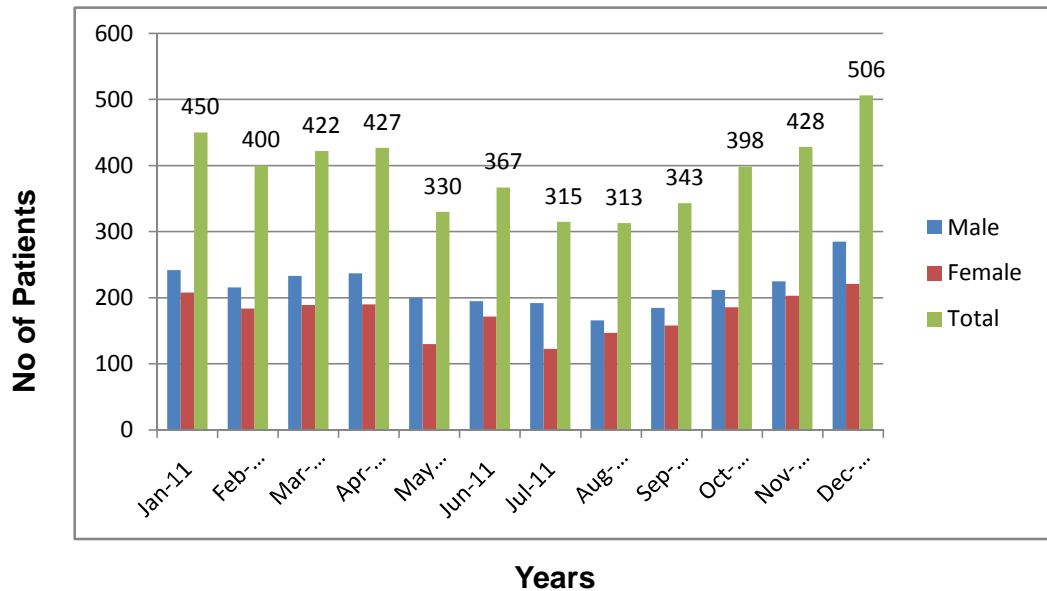
**Summary Of Admission**  
**Jan 2011 - Dec 2011**



**Karachi Institute of Heart Diseases**  
**Summary of X-Ray**  
**Jan 2011 To Dec 2011**

S.No	Month & Year	Male	Female	Total
1	Jan-11	242	208	450
2	Feb-11	216	184	400
3	Mar-11	233	189	422
4	Apr-11	237	190	427
5	May-11	200	130	330
6	Jun-11	195	172	367
7	Jul-11	192	123	315
8	Aug-11	166	147	313
9	Sep-11	185	158	343
10	Oct-11	212	186	398
11	Nov-11	225	203	428
12	Dec-11	285	221	506
<b>Total</b>		<b>2588</b>	<b>2111</b>	<b>4699</b>

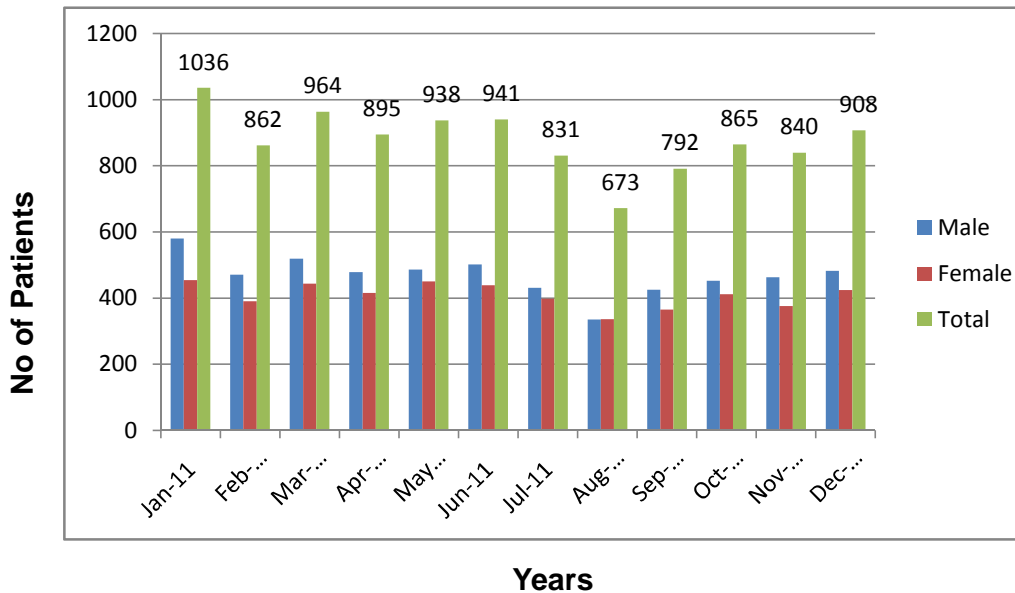
**Summary Of X-Rays**  
**Jan 2011 - Dec 2011**



**Karachi Institute of Heart Diseases**  
**Summary of Echo**  
**Jan 2011 To Dec 2011**

S.No	Month & Year	Male	Female	Total
1	Jan-11	581	455	1036
2	Feb-11	471	391	862
3	Mar-11	520	444	964
4	Apr-11	479	416	895
5	May-11	487	451	938
6	Jun-11	502	439	941
7	Jul-11	432	399	831
8	Aug-11	336	337	673
9	Sep-11	426	366	792
10	Oct-11	453	412	865
11	Nov-11	464	376	840
12	Dec-11	483	425	908
<b>Total</b>		<b>5634</b>	<b>4911</b>	<b>10545</b>

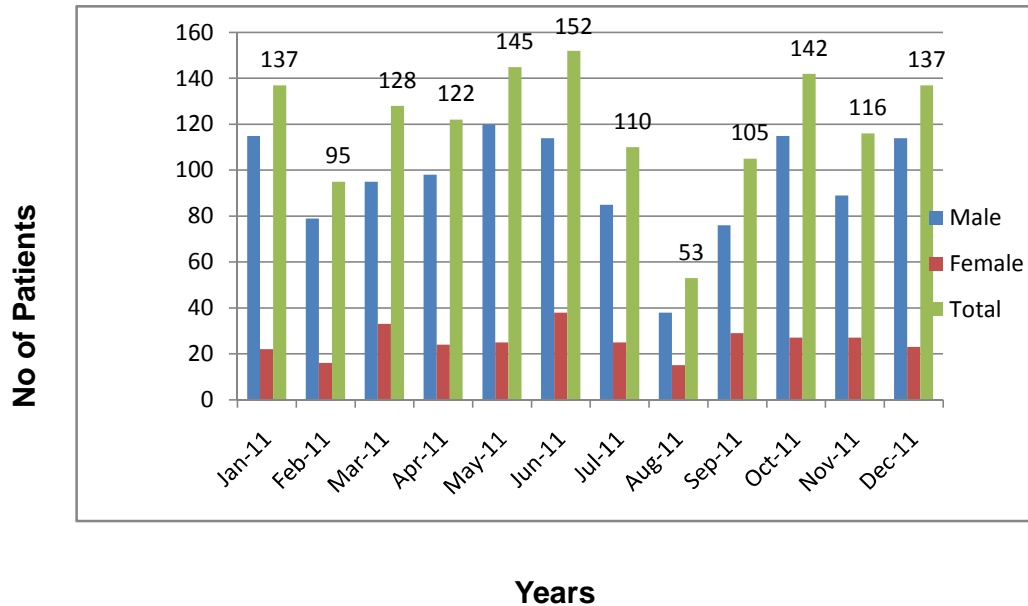
**Summary Of ECHO**  
**Jan 2011 - Dec 2011**



**Karachi Institute of Heart Diseases**  
**Summary of ETT**  
**Jan 2011 To Dec 2011**

S.No	Month & Year	Male	Female	Total
1	Jan-11	115	22	137
2	Feb-11	79	16	95
3	Mar-11	95	33	128
4	Apr-11	98	24	122
5	May-11	120	25	145
6	Jun-11	114	38	152
7	Jul-11	85	25	110
8	Aug-11	38	15	53
9	Sep-11	76	29	105
10	Oct-11	115	27	142
11	Nov-11	89	27	116
12	Dec-11	114	23	137
<b>Total</b>		<b>1138</b>	<b>304</b>	<b>1442</b>

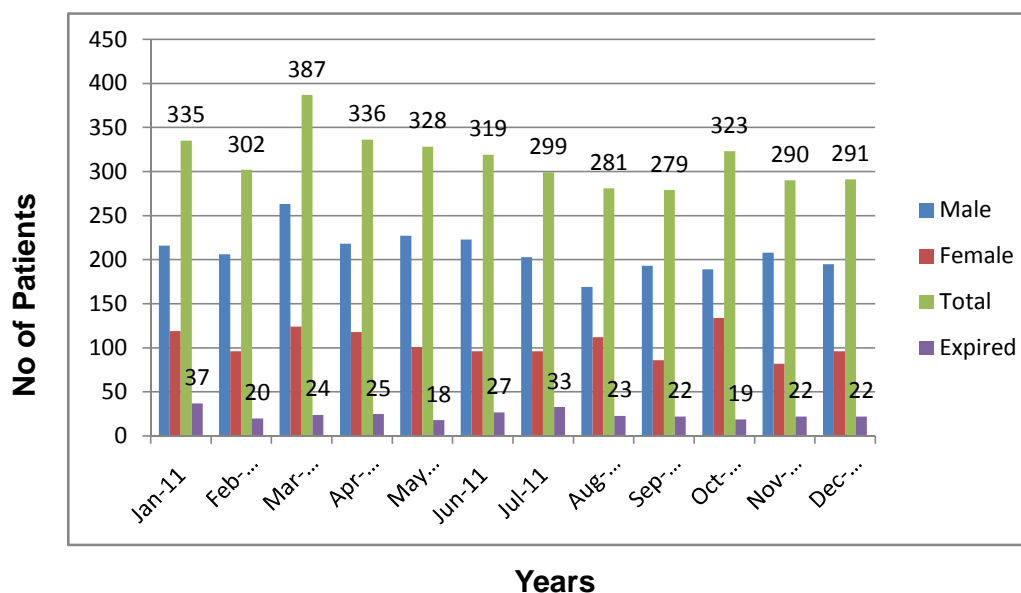
**Summary Of ETT**  
**Jan 2011 - Dec 2011**



**Karachi Institute of Heart Diseases**  
**Summary of CCU**  
**Jan 2011 To Dec 2011**

S.No	Month & Year	Male	Female	Total	Expired	Male	Female
1	Jan-11	216	119	335	37	25	12
2	Feb-11	206	96	302	20	13	7
3	Mar-11	263	124	387	24	19	5
4	Apr-11	218	118	336	25	16	9
5	May-11	227	101	328	18	11	7
6	Jun-11	223	96	319	27	21	6
7	Jul-11	203	96	299	33	16	17
8	Aug-11	169	112	281	23	15	8
9	Sep-11	193	86	279	22	15	7
10	Oct-11	189	134	323	19	15	4
11	Nov-11	208	82	290	22	17	5
12	Dec-11	195	96	291	22	12	10
<b>Total</b>		<b>2510</b>	<b>1260</b>	<b>3770</b>	<b>292</b>	<b>195</b>	<b>97</b>

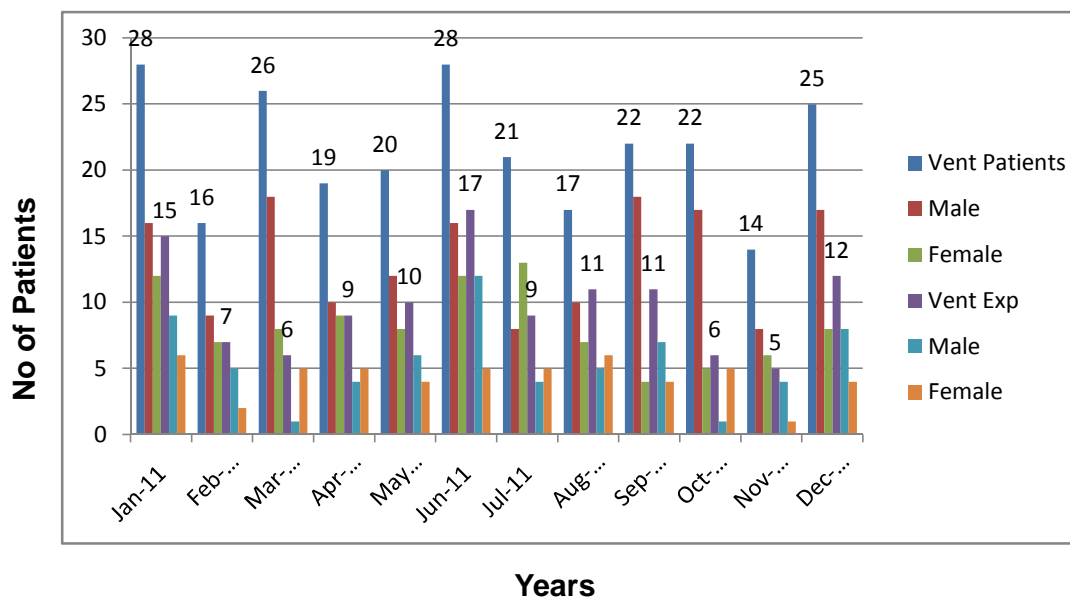
**Summary Of CCU**  
**Jan 2011 - Dec 2011**



**Karachi Institute of Heart Diseases**  
**Summary of CCU**  
**Jan 2011 To Dec 2011**

S.No	Month & Year	Vent Patients	Male	Female	Vent Exp	Male	Female
1	Jan-11	28	16	12	15	9	6
2	Feb-11	16	9	7	7	5	2
3	Mar-11	26	18	8	6	1	5
4	Apr-11	19	10	9	9	4	5
5	May-11	20	12	8	10	6	4
6	Jun-11	28	16	12	17	12	5
7	Jul-11	21	8	13	9	4	5
8	Aug-11	17	10	7	11	5	6
9	Sep-11	22	18	4	11	7	4
10	Oct-11	22	17	5	6	1	5
11	Nov-11	14	8	6	5	4	1
12	Dec-11	25	17	8	12	8	4
<b>Total</b>		<b>258</b>	<b>159</b>	<b>99</b>	<b>118</b>	<b>66</b>	<b>52</b>

**Summary Of CCU**  
**Jan 2011 - Dec 2011**





|



|

\_\_\_\_\_

\_\_\_\_\_

\_\_\_\_\_

\_\_\_\_\_

|

\_\_\_\_\_

|



|

|

|

|

\_\_\_\_\_

